

Company Overview (as of March 31, 2020)

| | |
|-------------------------|--|
| Corporate Name | TOHO GAS CO., LTD. |
| Date of Foundation | June 26, 1922 |
| Head Office | 19 -18, Sakurada-cho, Atsuta-ku, Nagoya, Aichi 456-8511, Japan |
| Representative Director | President Yoshiro Tominari |
| Main Businesses | •Gas business •Heat supply business •Electricity business •Production, transportation and sale of high-pressure gases including LNG and LPG •Sale of gas equipment and facilities, and gas piping installation |

| | |
|-----------------------|--|
| Capital | 33,072 million yen |
| City gas supply areas | 54 cities, 21 towns and 1 village in Aichi, Gifu and Mie Prefectures |
| Number of employees | 2,764 (6,198 on a consolidated basis) |
| Partner Companies | •100 ENEDO (gas equipment sales and service) shops •165 gas engineering companies |

Stock Information

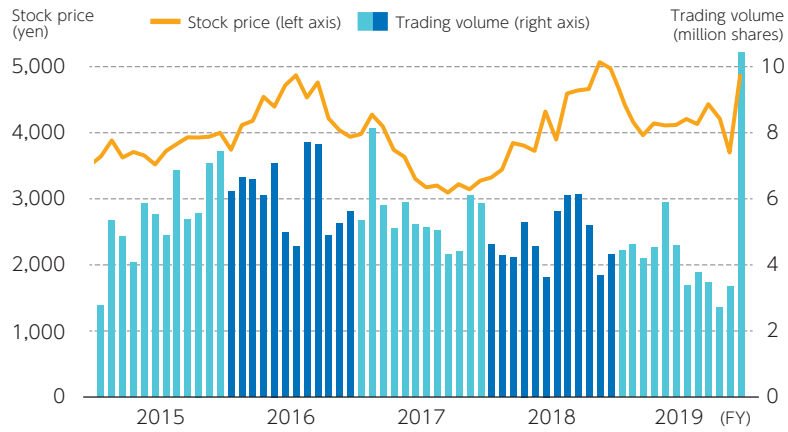
| | |
|--|---|
| Securities code | 9533 |
| Fiscal Year | April 1 to March 31 of the following year |
| Annual Shareholders Meeting | June every year |
| Stock Exchange Listing | Tokyo Stock Exchange, Nagoya Stock Exchange |
| Administrator of Shareholders' Register and Special Account Management Institution | Mitsubishi UFJ Trust and Banking Corporation |
| Contact | Corporate Agency Division, Mitsubishi UFJ Trust and Banking Corporation, 1-1 Nikko-cho, Fuchu, Tokyo, Japan |
| Number of Shares per Unit | 100 shares |
| Number of Shares Authorized to Be Issued | 160,000 thousand shares |
| Number of Issued Shares | 105,606,285 shares (including treasury stock 2,773 shares) |
| Number of Shareholders | 21,644 |

Major Shareholders

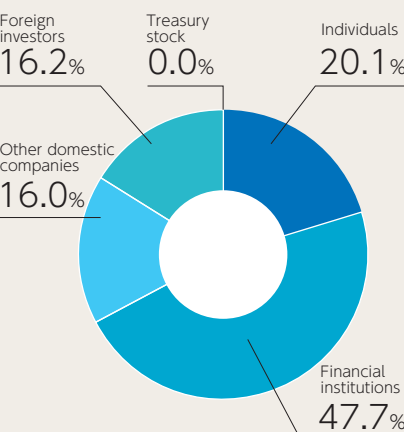
| Name of Shareholder | Number of Shares Held (Thousand) | Percentage of Share Ownership(%) |
|---|----------------------------------|----------------------------------|
| The Master Trust Bank of Japan, Ltd. (Trust a/c) | 5,894 | 5.58 |
| Nippon Life Insurance Co. | 5,854 | 5.54 |
| Sumitomo Mitsui Banking Corp. | 3,304 | 3.12 |
| Japan Trustee Services Bank, Ltd. (Trust a/c) | 3,270 | 3.09 |
| The Bank of Tokyo-Mitsubishi UFJ, Ltd. | 2,872 | 2.72 |
| The Dai-ichi Life Insurance Co., Ltd. | 2,582 | 2.44 |
| Toho Gas Group Employees Shareholding Association | 2,330 | 2.20 |
| Japan Trustee Services Bank, Ltd. (Trust a/c 5) | 2,003 | 1.89 |
| Meiji Yasuda Life Insurance Co. | 1,841 | 1.74 |
| JP Morgan Chase Bank 385151 | 1,574 | 1.49 |

Note: Percentage of share ownership is calculated by the number of shares excluding treasury stock (2,773 shares).

Trends in Stock Price and Trading Volume



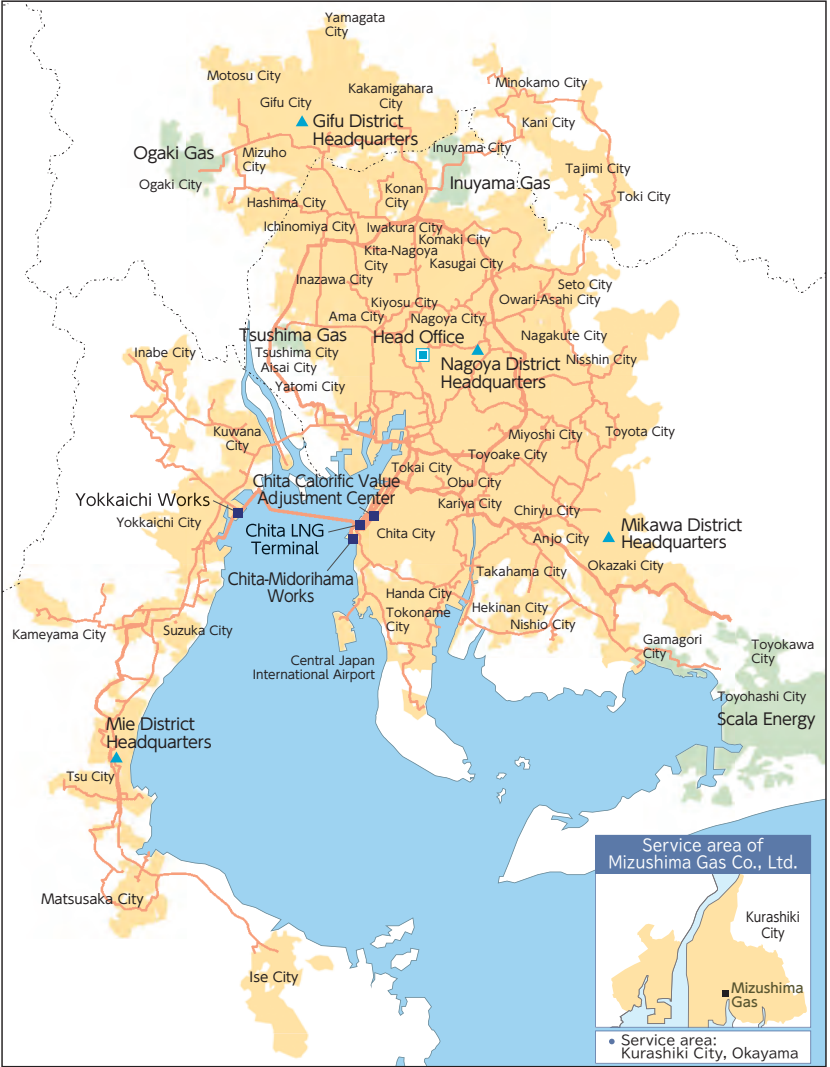
Composition of Shareholders



Overview of Major Pipeline Networks and City Gas Service Area

Major Business Sites

| Name | Location |
|---------------------------------------|--|
| Head Office | Atsuta-ku, Nagoya |
| Technical Research Institute | Tokai, Aichi |
| Nagoya District Headquarters | Chikusa-ku, Nagoya |
| Mikawa District Headquarters | Okazaki, Aichi |
| Gifu District Headquarters | Gifu, Gifu |
| Mie District Headquarters | Tsu, Mie |
| Chita LNG Terminal | Chita, Aichi |
| Chita-Midorihamma Works | Chita, Aichi |
| Chita Caloric Value Adjustment Center | Chita, Aichi |
| Yokkaichi Works | Yokkaichi, Mie |
| Singapore Branch | 80 Robinson Road #10-01 A Singapore 068898 |



Major Affiliated Companies

- Toho Real Estate Co., Ltd.
- Toho Gas Living Co., Ltd.
- Toho Gas Techno Co., Ltd.
- Toho Liquefied Gas Co., Ltd.
- Toho Gas Information System Co., Ltd.
- Toho Gas Safety Life Co., Ltd.
- Mizushima Gas Co., Ltd.
- Toho Gas Customer Service Co., Ltd.
- Yamasa Co., Ltd.
- Toho Gas Engineering Co., Ltd.
- Toho Service Co., Ltd.
- Toho Gas Australia Pty. Ltd.

Note: The number of consolidated subsidiaries, including the above major affiliated companies, is 31.

Our Websites

Investor Relations

<https://www.tohogas.co.jp/lang-n/en/corporate/>



Initiatives for ESG

<https://www.tohogas.co.jp/lang-n/en/approach/eco/>



*We consolidated common shares at a ratio of five shares to one share on October 1, 2017. Accordingly, the stock price and trading volume figures reflect the impact of the consolidation of shares.