

Company Overview (as of March 31, 2018)

Corporate Name	TOHO GAS CO., LTD.
Date of Foundation	June 26, 1922
Head Office	19-18, Sakurada-cho, Atsuta-ku, Nagoya, Aichi 456-8511, Japan
Representative Director	President Yoshiro Tominari
Main Businesses	<ul style="list-style-type: none"> Gas business Heat supply business Electricity business Production, transportation and sale of high-pressure gases including LNG and LPG Sale of gas equipment and facilities, and gas piping installation

Capital	33,072 million yen
City gas supply areas	54 cities, 20 towns and 1 village in Aichi, Gifu and Mie Prefectures
Number of employees	2,858 (5,892 on a consolidated basis)
Partner Companies	<ul style="list-style-type: none"> 102 ENEDO (gas equipment sales and service) shops 171 gas works companies

Stock Information

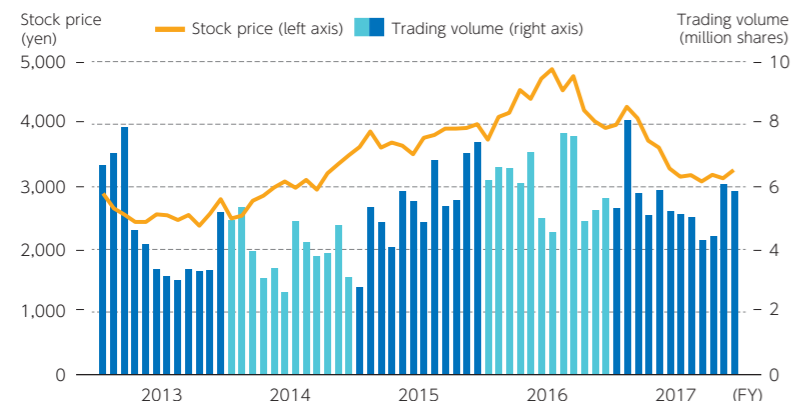
Securities code	9533
Fiscal Year	April 1 to March 31 of the following year
Annual Shareholders Meeting	June every year
Stock Exchange Listing	Tokyo Stock Exchange, Nagoya Stock Exchange
Administrator of Shareholders' Register and Special Account Management Institution	Mitsubishi UFJ Trust and Banking Corporation
Contact	Corporate Agency Division, Mitsubishi UFJ Trust and Banking Corporation, 1-1 Nikko-cho, Fuchu, Tokyo, Japan.
Number of Shares per Unit	100 shares
Number of Shares Authorized to be Issued	160,000 thousand shares
Number of Issued Shares	106,351 thousand shares (including 12 thousand shares)
Number of Shareholders	24,246

[Major Shareholders]

Name of Shareholder	Number of Shares Held (thousand)	Percentage of Share Ownership (%)
Nippon Life Insurance Co.	5,854	5.50
The Master Trust Bank of Japan, Ltd. (Trust a/c)	4,093	3.84
Japan Trustee Services Bank, Ltd. (Trust a/c)	3,599	3.38
Sumitomo Mitsui Banking Corp.	3,304	3.10
The Bank of Tokyo-Mitsubishi UFJ, Ltd.	2,872	2.70
Toho Gas Group Employees Shareholding Association	2,625	2.46
The Dai-ichi Life Insurance Co., Ltd.	2,582	2.42
Japan Trustee Services Bank, Ltd. (Trust a/c 5)	1,892	1.77
Meiji Yasuda Life Insurance Co.	1,841	1.73
Toho Gas Kyo-ei Shareholding Association	1,611	1.51

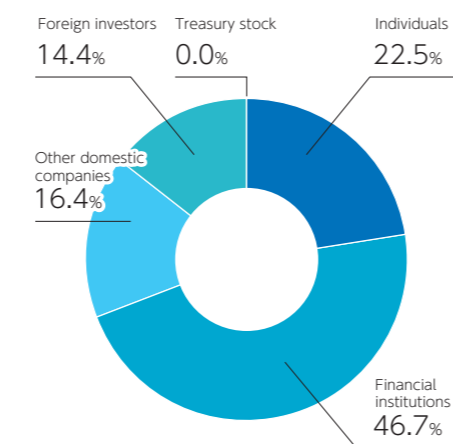
Note: Percentage of share ownership is calculated by the number of shares excluding treasury stock (12,002 shares).

[Trends in Stock Price and Trading Volume]



*We consolidated common shares at a ratio of five shares to one share on October 1, 2017. Accordingly, the stock price and trading volume figures reflect the impact of the consolidation of shares.

[Composition of Shareholders]

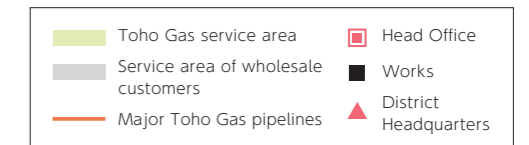


Overview of Major Pipeline Network and Natural Gas Service Area



[Major Business Sites]

Name	Location
Head Office	Atsuta-ku, Nagoya
Technical Research Institute	Tokai, Aichi
Nagoya District Headquarters	Chikusa-ku, Nagoya
Mikawa District Headquarters	Okazaki, Aichi
Gifu District Headquarters	Gifu, Gifu
Mie District Headquarters	Tsu, Mie
Chita LNG Terminal	Chita, Aichi
Chita-Midorihamma Works	Chita, Aichi
Chita Calorific Value Adjustment Center	Chita, Aichi
Yokkaichi Works	Yokkaichi, Mie
Singapore Branch	80 Robinson Road #10-01A Singapore 068898



Major Affiliated Companies

- Toho Liquefied Gas Co., Ltd.
- Mizushima Gas Co., Ltd.
- Toho Gas Safety Life Co., Ltd.
- Toho Gas Customer Service Co., Ltd.
- Toho Gas Techno Co., Ltd.
- Toho Gas Engineering Co., Ltd.
- Toho Gas Living Co., Ltd.
- Toho Real Estate Co., Ltd.
- Toho Gas Information System Co., Ltd.
- Toho Service Co., Ltd.
- Toho Gas Australia Pty. Ltd.

Note: The number of consolidated subsidiaries, including the above major affiliated companies is 22.

Our Websites



Investor Relations
<http://www.tohogas.co.jp/lang-n/en/corporate/>



Initiatives for Environment (Japanese only)
<http://www.tohogas.co.jp/approach/eco/>

