

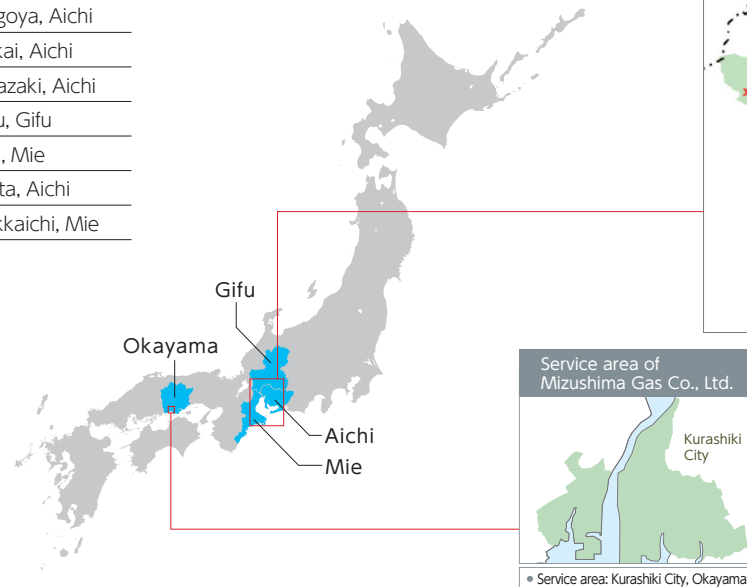
Company Overview (as of March 31, 2023)

As an energy operator based in the three-prefecture Tokai region, which enjoys a concentration of manufacturing industries, Toho Gas has succeeded in growing and developing together with the region.

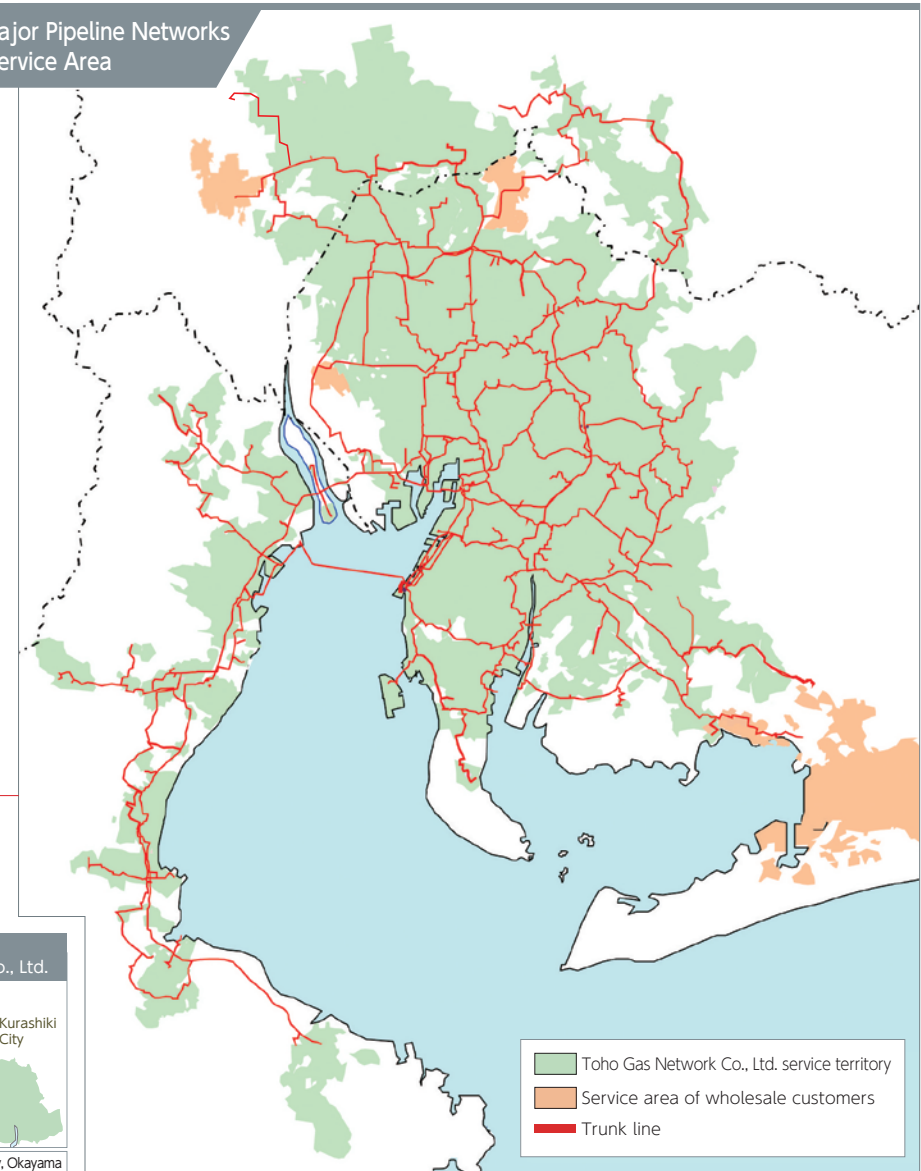
Name	TOHO GAS CO., LTD.
Date of Foundation	June 26, 1922
Head Office	19 -18, Sakurada-cho, Atsuta-ku, Nagoya, Aichi 456-8511, Japan
Main Businesses	<ul style="list-style-type: none"> • Gas business • Heat supply business • Electricity business • Acquisition and purchasing of energy resources, such as natural gas
Capital stock	33,072 million yen
Number of employees	1,638 (6,080 on a consolidated basis)

Major Business Sites and Plants

Name	Location
Head Office	Nagoya, Aichi
Technical Research Institute	Tokai, Aichi
Okazaki Office	Okazaki, Aichi
Gifu Office	Gifu, Gifu
Tsu Office	Tsu, Mie
Chita Production Department	Chita, Aichi
Yokkaichi Works	Yokkaichi, Mie



Overview of Major Pipeline Networks and City Gas Service Area



Consolidated subsidiaries

(million yen)			
	Company name	Capital stock	Major Businesses
Gas Business	Toho Gas Network Co., Ltd.	3,000	Gas Appliance Sales and Related Construction
	Toho Gas Customer Service Co., Ltd.	50	Trustee business of reading gas meter and collecting charges in gas business
	Toho Gas Techno Co., Ltd.	45	Construction of gas pipes, paving and road repair Sales and installation of gas equipment etc.
LPG and Other Energies	Mizushima Gas Co., Ltd.	225	Gas and LPG business in Kurashiki City, Okayama
	Toho Liquefied Gas Co., Ltd.	480	LPG business, sales of coke and petroleum products
	TOEKI CUSTOMER SERVICE Co., Ltd.	75	Trustee business of reading gas meter and collecting charges in LPG business
	Toeki Kyokyu Center Co., Ltd.	50	Trustee business of delivery and maintenance service in LPG business
	Waseda Gas Co., Ltd.	10	LPG business
	Yamasa Sohgyou Co., Ltd.	96	LPG business, design and construction of residential extension and alteration, residential equipment sales, manufacturing and sales of home delivery water
	Inuyama Gas Service. Co., Ltd.	10	LPG business, design and construction of residential extension and alteration, residential equipment sales
Electricity business	Sirius Solar Japan 63 GK	0	Electricity business
Other Businesses	Toho Real Estate Co., Ltd.	821	Leasing and management of real estate, management of sports facilities etc.
	Toho Gas Engineering Co., Ltd.	100	Design, construction, and maintenance of gas production plant equipment and comprehensive utility service business
	Toho Gas Living Co., Ltd.	85	Sales of housing equipment, design and construction of residential buildings, expansion and renovation
	Toho Gas Information System Co., Ltd.	80	System engineering and management and data processing services
	Toho Service Co., Ltd.	48	Car sales, lease and maintenance, leasing of equipment item, insurance agency, and travel agency
	Toho LNG Shipping Co., Ltd.	300	Lending of LNG ships
	Toho Reinetsu Co., Ltd.	90	LNG cooling/high-pressure gas sales, trustee business of low-temperature grinding treatment
	Toho Gas Safety Life Co., Ltd.	40	Trustee business of gas equipment safety management, management of ENEDO, Toho Gas stores
	Gas Living Mie Co., Ltd.	10	Design and construction of residential extension and alterations, management of ENEDO, Toho Gas stores, and sales of residential equipment
	Yokkaichi Air Conditioning Engineering Co., Ltd.	50	Installation and O&M of air-conditioning equipment
	Yamasa yu-land Ltd.	5	Managing of bathing facilities
	Toho Gas Australia Pty Ltd	192 million USD	Development and investment in natural gas in Australia
	Toho Gas Ichthys Pty Ltd	94 million USD	Natural gas related development and investment
	Toho Gas Ichthys Development Pty Ltd	87 million USD	Natural gas related development and investment
	Toho Gas Canada Ltd.	81 million USD	Natural gas related investment

Our Websites

Investor Relations
<https://www.tohogas.co.jp/lang-n/en/corporate/>



Initiatives for ESG
<https://www.tohogas.co.jp/lang/en/approach/eco/>



Editorial Policy

Our Integrated Report introduces specific initiatives to provide stakeholders with a deeper understanding of Toho Gas Group. We will continue to reflect your comments and opinions in our efforts to further enhance the content of this report so that it will be a useful tool for communicating with our stakeholders.

Reporting Period

FY2022 (April 1, 2022-March 31, 2023)
 Some activities covered took place in FY2023.

Reporting Scope

In principle, Toho Gas Co., Ltd., consolidated subsidiaries and equity-method subsidiaries (as of March 31, 2023) are described as "Toho Gas Group." Information about some part of the Group will be indicated in individual reports for specific organizations.

Descriptions of Future Expectations

The statements in this report concerning future expectations are forecasts based on information currently available and may include potential risks and uncertainties. Be aware, therefore, that due to various factors, actual results may differ from forecasts contained in this report.

Reference Guidelines

International Integrated Reporting Council (IIRC) Framework
 Guidance for Integrated Corporate Disclosure and Company-Investor Dialogues for Collaborative Value Creation
 GRI Standards
 ISO26000
 Environmental Reporting Guidelines (2018 version)
 Recommendations of the Task Force on Climate-related Financial Disclosures (TCFD)

Publishing Department

CSR / Environment Dept. Finance Dept.

Published

August 2023 (Next edition: scheduled for August 2024)